

**Soenen | Five AM**



With prospects for growth, a creative and attractive working environment is necessary. Young talent does not come automatically. A warm, stylized environment and a focus on "metal", weapon of choice for sheet metal machine manufacturer Soenen, it succeeds.

Flooring contractor Rasschaert Schilder & Decoratiewerken

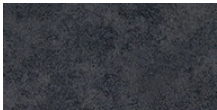
Lieu Roeselare

Décorateur d'intérieur Coordinated all about interiors (Chris De Neve) & FIVE AM

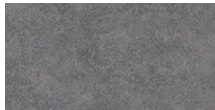
Photographe Tim van de velde

Date d'achèvement 2020

**Revêtements de sol utilisés**



Flotex Colour  
Calgary ash



Flotex Colour  
Calgary cement

